

Design Review #1



Project Mealwrite: Team Rat in a Hat



Charles Saluski



Matthew Martinez



Krystian Bednarz

Mentored By:

Anirban Chetia

Tomos Prys-Jones

MealWrite Founders

- Jenny Hoffmann, PhD
 - Entrepreneur and cofounder of MealWrite
 - Peripheral Arterial business leader at Gore



- Martin Sector
 - Cofounder and CTO of MealWrite
 - Principal Technologist at Gore



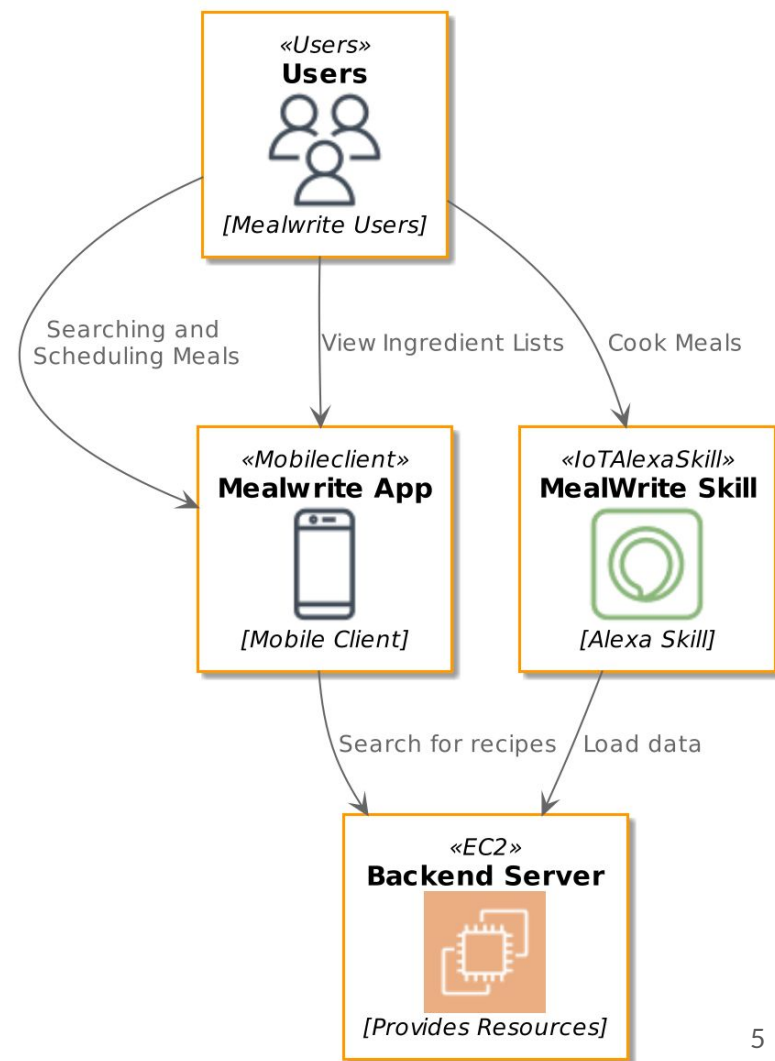


Problem Statement

- Unplanned cooking process
 - Blind searching for recipes
 - Inadequate time management
- Difficulties with cooking alone
 - No one tells the cook what to do
 - Lack of time efficiency
 - Steps done one at a time

Solution Overview

- Mobile Application
 - Search for recipes
 - Schedule Recipes
- Alexa Skill
 - Voice Coach
 - Manage timers
 - Manage steps





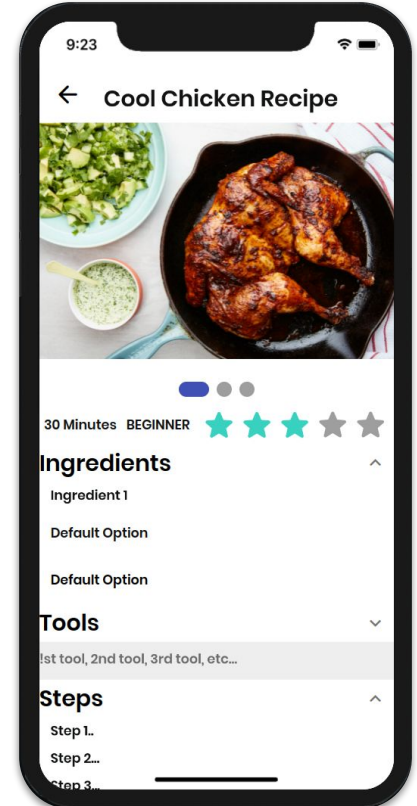
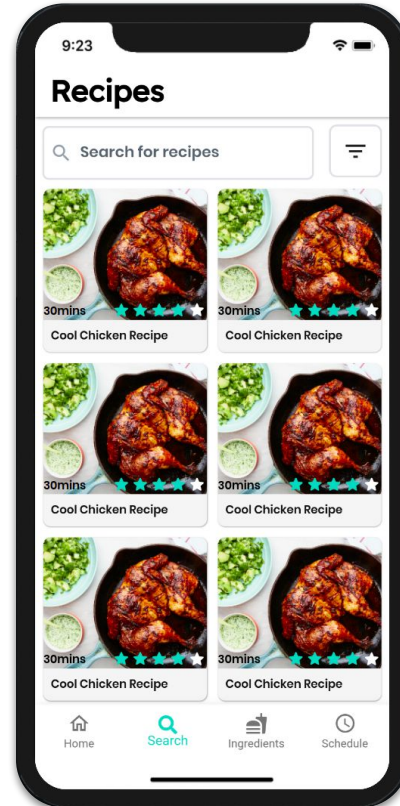
Key Requirements

- Functional requirements
 - Mobile application
 - Alexa voice assistant
- Performance requirements
- Environmental requirements

Functional Requirements:

Mobile Application

- Search
 - Dietary Restrictions
 - Cuisine
- Plan
 - Date
 - Time
 - Ingredient substitutions
 - Increase servings

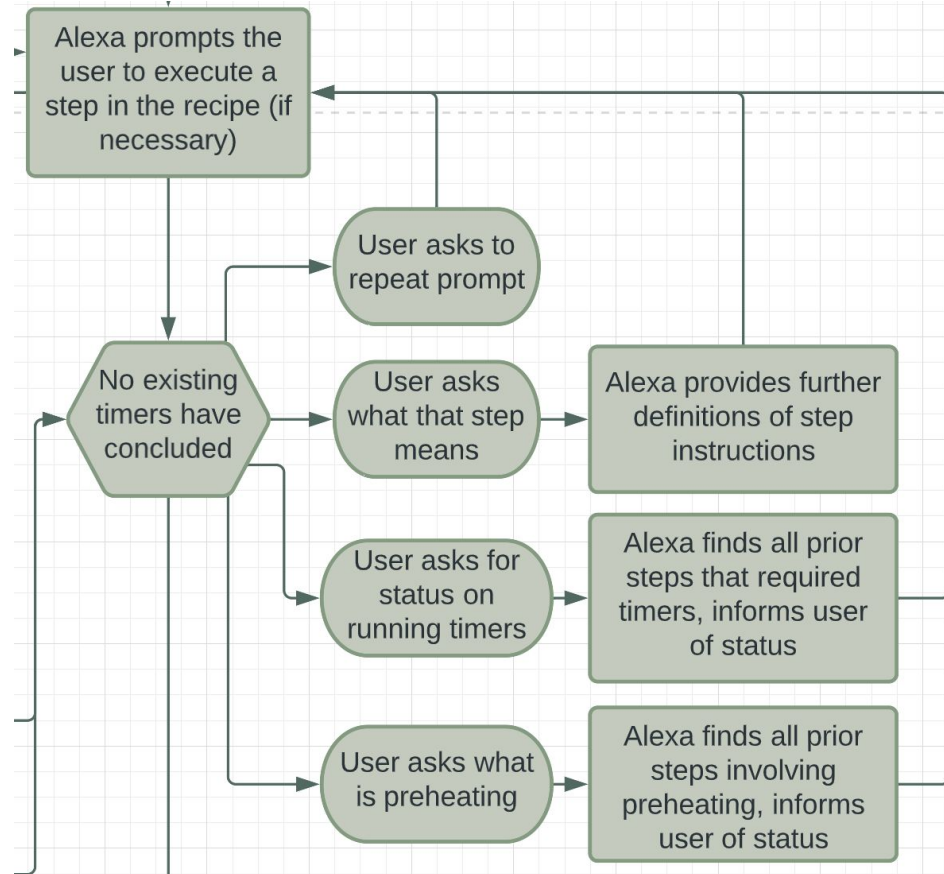


Functional Requirements:

Alexa

Note: Provided image is segment of larger flowchart for clarity

- Time management
 - Running timers
 - Preheating
- User assistance
 - Clarify steps





Performance and Environmental

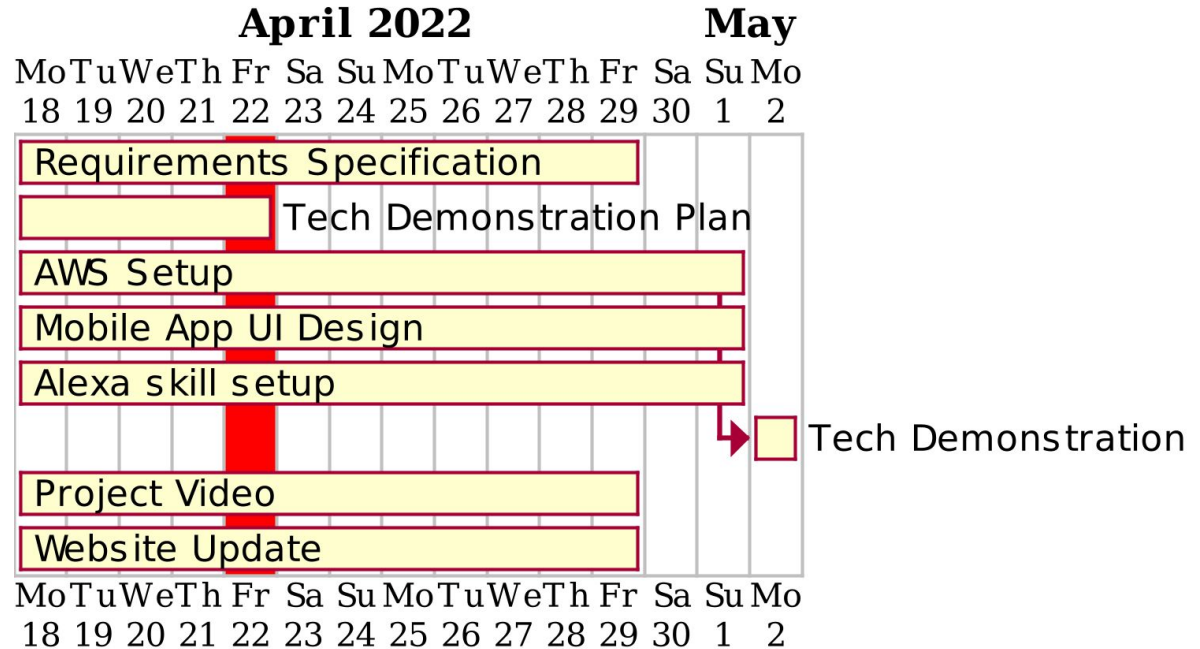
- Storage
 - Recipes
 - User Accounts
- Performance
 - Scalability
- Environmental
 - Alexa Device
 - Android Phone
 - Cloud infrastructure on AWS



Risks

- Release of direct competitor
- Alexa or other features are deprecated
- AWS price increase
- Unforeseeable programming issues, involving third parties
- Loss of a member of the development team

Project Plan





Conclusion

- Our clients and team aim to solve the home cooking problems of the modern world
- Project MealWrite will involve a multitude of moving parts necessary for project completion
- Potential risks are accounted for
- Proper scheduling systems are in place



Thank you!